

Trabuco Oaks Drive Asphalt Overlay



Important road closure and parking restriction information below



Summary

OC Public Works will complete an asphalt overlay for a new roadway surface along the entire reach of Trabuco Oaks Drive, from Trabuco Canyon Road to the OCTA Nature Preserve. This is not a road widening project. The width of the roadway will not change. **Due to the width of the roadway, a full closure will be required on working days between 9 am — 3 pm to accommodate equipment and critical activities. Only emergency access will be permitted during construction activity.** Parking will be restricted along Trabuco Oaks Drive during working hours for the duration of construction.

WHAT

OC Public Works will complete the project in phases in an effort to mitigate the impact on residents and businesses located within the project area. The working hours will be limited to best accommodate resident access.

Depending on the location of the work, Trabuco Oaks Drive will be closed to automobiles, pedestrians, equestrians and bicycles on working days from 9 am — 3 pm between July 29 — August 9. See the map below for timing details.

WHEN

Anticipated Construction Duration (Updated Start Date)

July 22, 2019 — August 16, 2019

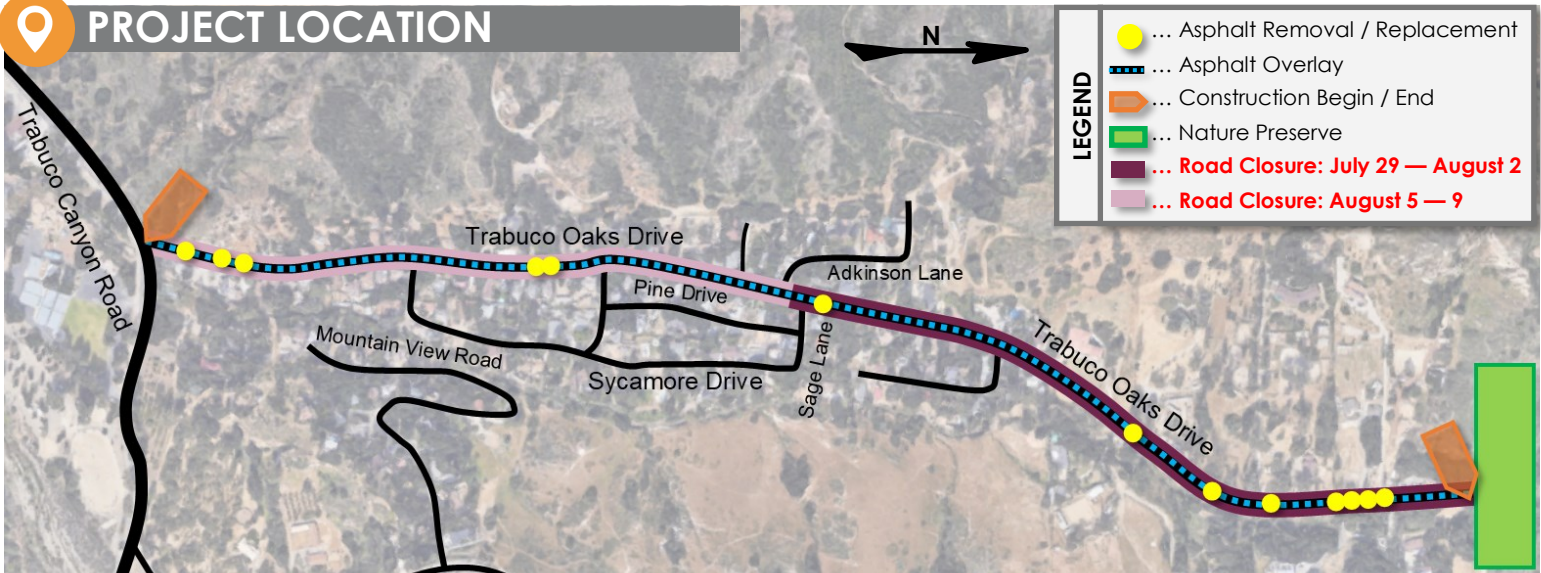
Working Hours | Weekdays | 8:30 am — 4 pm

Road Closures | 9 am — 3 pm

The construction schedule is tentative and subject to change due to weather and other factors.

“No Parking” signs and door hangers will be placed 72-hours prior to construction. Vehicles that impede construction activity, including those parked on the shoulder of the roadway will be subject to towing.

PROJECT LOCATION



CONTACT INFORMATION

Nathan Wheadon
 714.667.9602

www.ocpublicworks.com
 ProjectInfo@ocpw.ocgov.com

[Facebook.com/ocpublicworks](https://www.facebook.com/ocpublicworks)
 [Twitter.com/ocpublicworks](https://twitter.com/ocpublicworks)