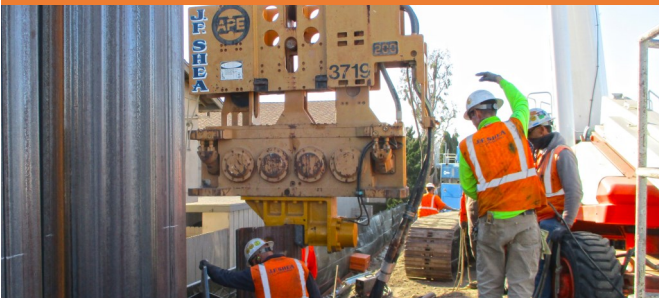




CONSTRUCTION NOTICE!

EAST GARDEN GROVE- WINTERSBURG CHANNEL

Through April 30, 2021, construction crews will begin pile driving using alternative equipment in two locations: (1) near the Edwards St. channel crossing and (2) approximately 1,300 ft. east near the USPS. **Noise and vibrations are expected during working hours, Monday-Friday, 7 a.m.—5 p.m.**



CONTACT INFORMATION



Larry Quach



(714) 856-4533



ProjectInfo@ocpw.ocgov.com



ocpublicworks

VISIT US ONLINE @ ocpublicworks.com/EGGW